

# 4G UPGRADE INSTALLATION INSTRUCTIONS

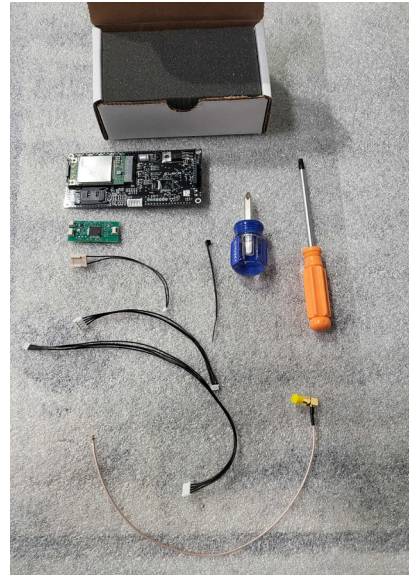
## You will need

---

1. Elika 4G upgrade kit
  - a. 4G Cellular board
  - b. Converter board
  - c. 4G harness
  - d. Power Harness
  - e. Front Board Harness
  - f. Antenna Cable
  - g. Zip Tie
2. Torx T25 Security screwdriver \*
3. Phillips screwdriver \*\*
4. Scissors or wire cutters

\* - Provided with the Elika 460

\*\* - Not provided



## Instructions

---

1. Using your Torx T25 Security Screwdriver, remove security screws from the front of the Elika 460 (save security screws for later use) open door.
2. Remove power terminal from Main board.
3. Remove Cell board
  - a. Remove Cell Harness from Cell board
  - b. Remove Nylon standoffs from cell board (Save standoffs for later use)
  - c. Remove Cell board by pulling board straight back.
  - d. Remove Antenna cable from cell board

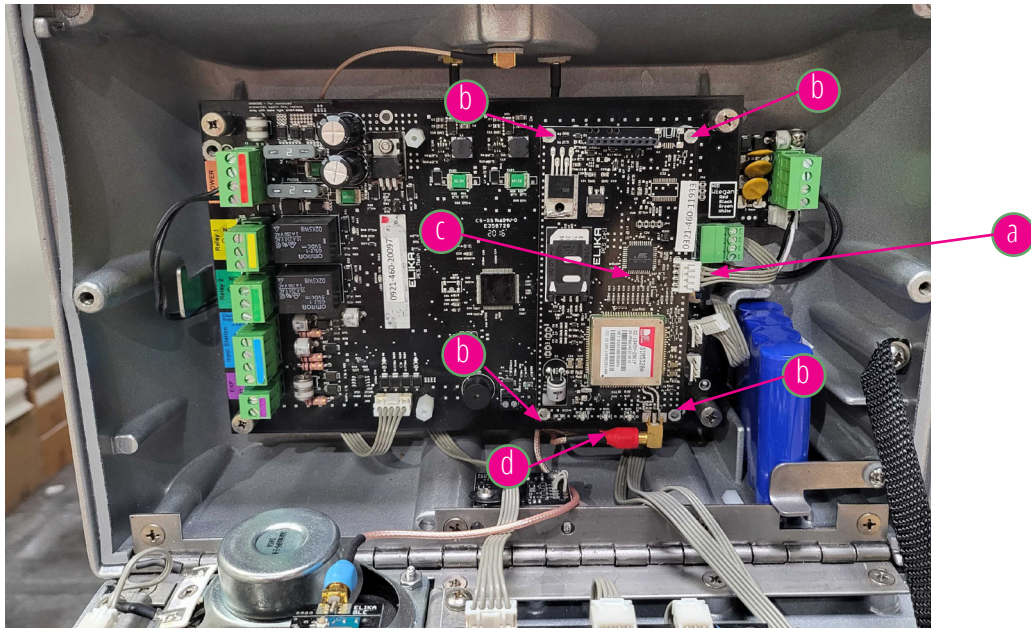


Image for step 3

4. Remove Main Board
  - a. Remove all Connected Relay, Inputs, and Wiegand Terminals (not necessary if not used)
  - b. Remove Front board power harness from main Board
  - c. Remove Thumb Screws from Main Board (save for use later)
  - d. Remove Main Board (save for use later)

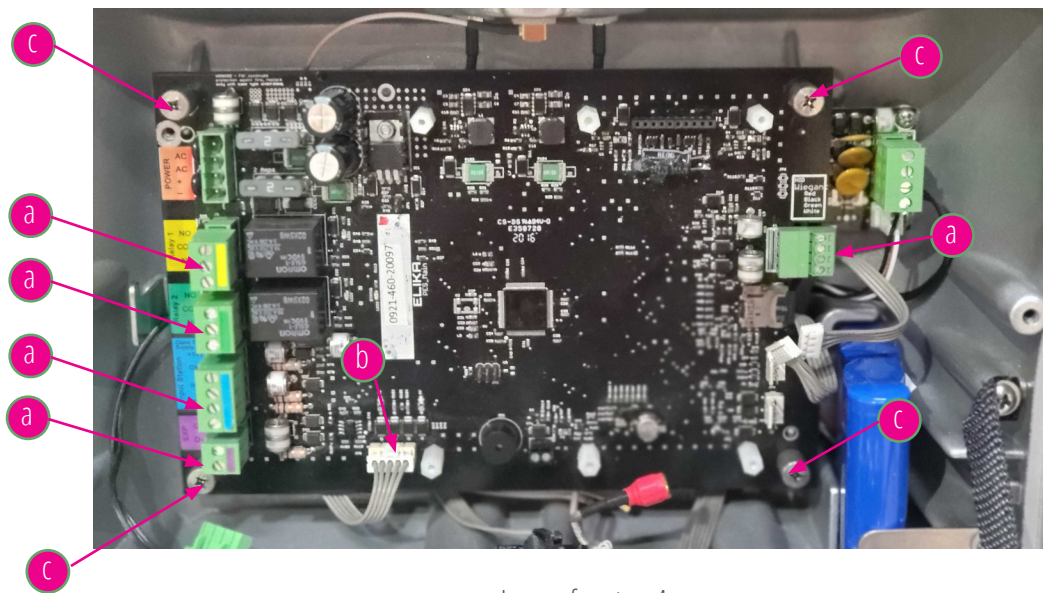


Image for step 4

5. Remove Antenna cap
  - a. Using your Phillips screwdriver remove the screw holding the antenna cap (save screw for use later).
  - b. Remove Antenna Cap (save for use later).

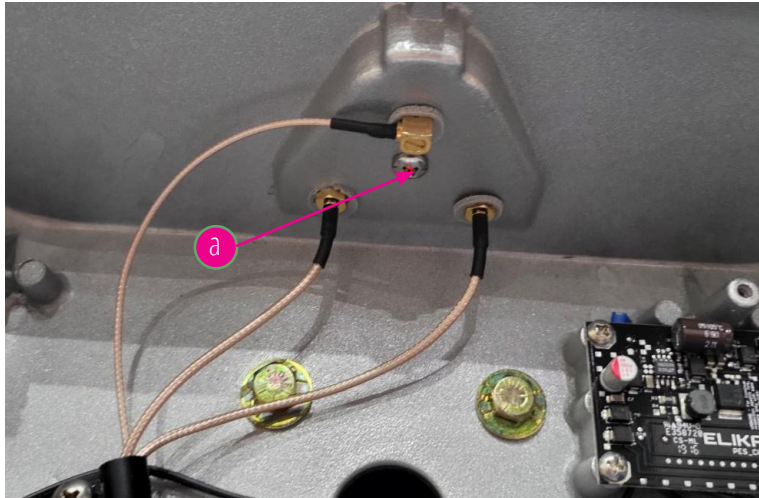


Image for step 5

6. Remove Antenna and antenna cable
  - a. Remove Antenna by unscrewing counterclockwise (save for later use).
  - b. Remove the antenna cable by unscrewing the cable nut.
  - c. Push antenna cable back through the mounting hole (you may remove VoIP antenna cable, if it is installed, you will not need this).

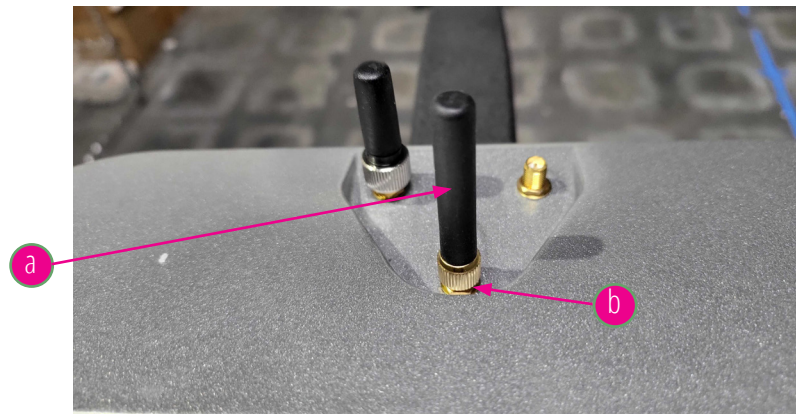


Image for step 6



7. Install new antenna cable
  - a. Remove old Cell antenna cable by removing the strain relief clips holding it in (save hardware and strain relief for later use)
    - i. Re-install strain reliefs once old Antenna cable is removed
  - b. Remove nut from F connector (save for later use)
  - c. Insert antenna cable through the mounting hole
    - i. If you received a right ang connector, the cable should be directed to the left (see image for step 5)
  - d. Re-attach nut to the F connector on top of the Elika device securing the antenna cable in place (see image 6b).
  - e. Attach Antenna (saved during step 6) (see image step 6 a) to F connector
  - f. Attach Antenna cap (use cap and screw saved from step 5)
  - g. Rout Antenna cable through strain relief first through top left, then through bottom Left

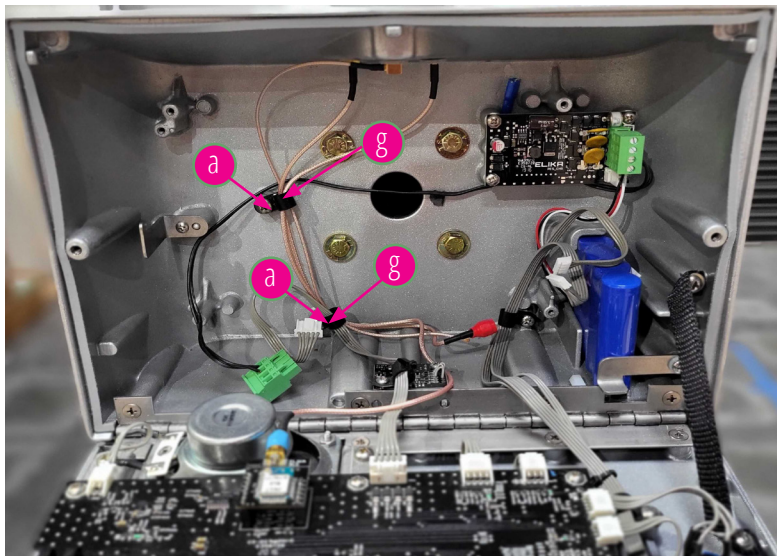
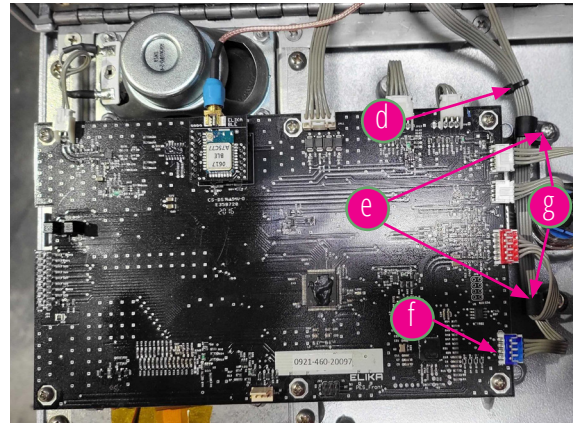
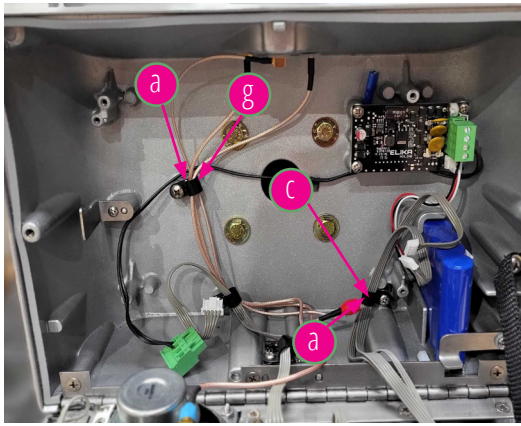


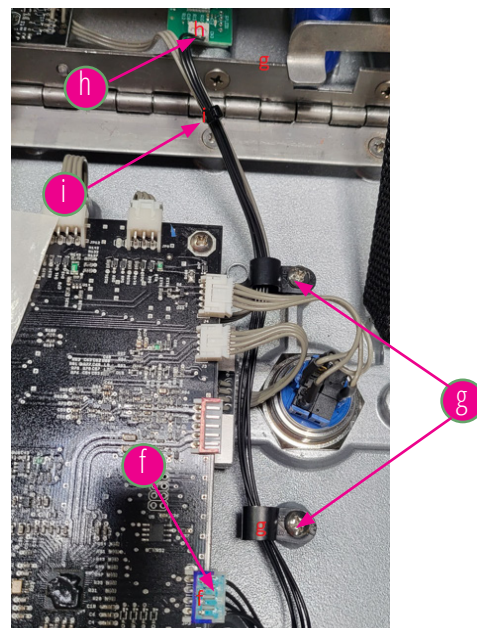
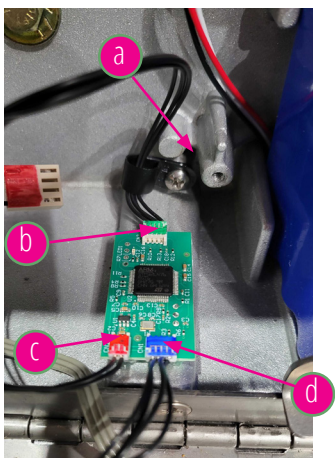
Image for step 7

8. Remove old Cell/Voip harnesses
  - a. Remove the strain relief holding the Cell/Voip from rear casting
  - b. Remove the Cell and Voip harnesses (Voip may not be installed)
  - c. Replace the strain relief onto the rear casting
  - d. Remove zip tie from harnesses
  - e. Remove the strain reliefs from the front casting (save for later use)
  - f. Disconnect cell and voip harnesses from the front board and remove harnesses (Voip harness may not be installed).
  - g. Replace strain reliefs onto the front casting



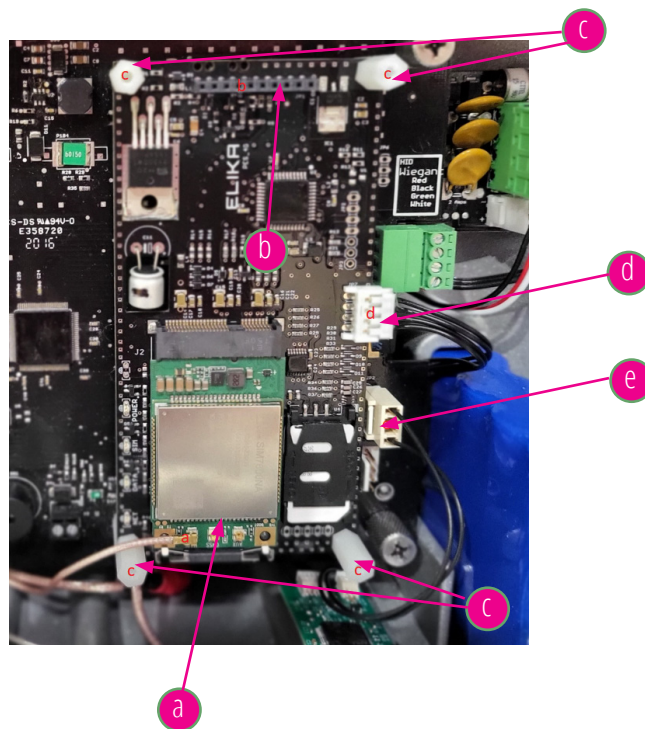
Images for step 8

9. Install the Converter board
  - a. Rout the 4G harness from top to bottom through the bottom right strain relief on the rear casting.
  - b. Plug the 4G harnesses into the converter board
  - c. Plug the power harnesses into the converter board
  - d. Remove protective film from mounting tape attached to the converter board
  - e. Attach converter board to far right rib of rear casting
    - i. Be sure to leave enough room for the front board harness
  - f. Attach front board harness to front board
  - g. Rout front board harness through strain reliefs on front casting
  - h. Plug front board harness into the converter board
  - i. Attach zip tie to front board harness and LED harness



Images for step 9

10. Re-install Main Board (use image for step 3 for reference)
  - a. Re-install Thumb Screws from Main Board (Image 3 c)
  - b. Re-install Front board power harness from main Board (Image 3 b)
  - c. Re-Install all Connected Relay, Inputs, and Wiegand Terminals (Not necessary if not used) (Image 3 a)
11. Install new 4G Cellular Board
  - a. Attach Antenna cable to cell board May be easier than attaching later)
    - i. Attach button connector to the far left button socket
  - b. Attach 4G Cell board by aligning pins and pushing straight in
  - c. Re-install nylon standoffs
  - d. Attach 4g harness to 4g cell board
  - e. Plug in converter power harness into main board (above Wiegand 2 input)



Images for step 11

12. Install Power harness into main board (System should now power back up)
13. Close door and re-install security screws

14. Make a test call

- a. Please note: System will take 5 seconds to connect audio, please wait and try to communicate through the call box, the second call will connect as normal
- b. If This device is not used for calls, simply confirm your welcome message appears on display, this will confirm your device is now connected

Congratulations! Your Upgrade Kit Installation is now complete.